

PRO APF MITL

Medium Intensity Taxiway Edge Light – LED

Compliances:

FAA AC 150/5345-46: L-861T
 ICAO Annex 14 - Blue 5.3.18.7 & 5.3.18.8
 Canada TP312 Blue 5.3.10.13, B10, B11



Applications

The PRO APF MITL is an LED fixture used as a medium intensity taxiway edge light.

Features

- New WaveTrac™ technology reduces power consumption up to 80% compared to incandescent
- Supports universal power platform found in PRO APF in-pavement fixtures for minimized supply stock
- Innovative design for ease of installation and maintenance
- Removable nut secures glass dome to housing, and allows for quick access to power supply and LED optical assembly
- Built-in leveling bosses accept standard circular bubble level
- Three-screw leveling with hex head bolts
- Available in installed heights of 14 inches (350mm), 24 inches (607mm) and 30 inches (759mm)
- Compatible with 1.5" and 2" frangible couplings
- Long life LED technology with rated projected life (L70) greater than 50,000 hours at 6.6A*
- Highly durable cast aluminum housing painted yellow
- 5-step constant current operation
- External power cord and ground option for non-FAA compatibility
- Arctic kit option available
- Energy-efficient arctic kit utilizes filament applied directly to the glass dome to minimize energy losses
- Frangible coupling with integral fluid barrier to prevent ambient precipitation from entering base
- LED and electronics housed in IP67 rated assembly
- RoHS compliant (except column)
- Typical fixture in-rush voltage of 1.5V

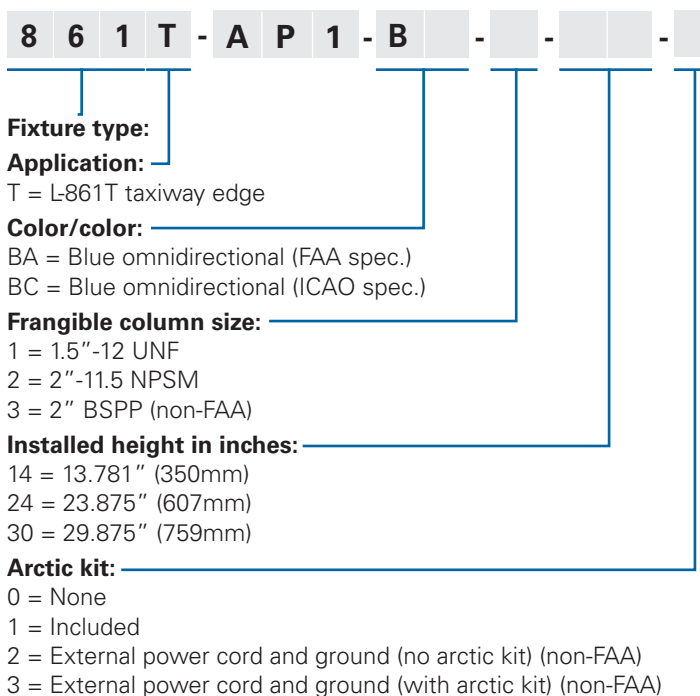
*FAA option. ICAO option information not available.

Ordering Information

How to order: A complete assembly will consist of separate order items for the MITL fixture, stake or baseplate with base or junction box with cover, isolation transformer and L-823 connector kit.

The standard version of taxiway edge light is 861T-AP1-BA-1-14-0, an FAA compliant fixture featuring a 1.5" diameter column, 14" installed height with no arctic kit.

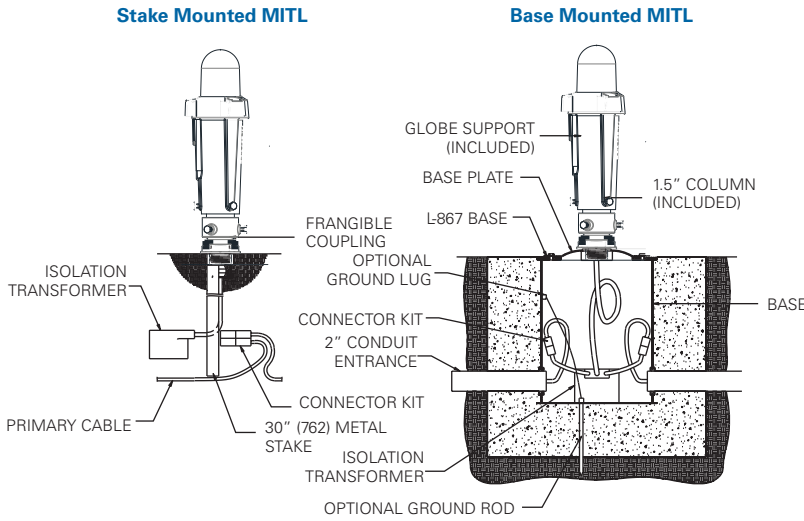
Example: 861T-AP1-BA-1-24-1 is a 24" installed height omnidirectional fixture with FAA specification compliant blue light and a 1.5" frangible column, including arctic kit.



Dimensions:	Inches (mm)
Instruction Manual:	1188
Shipping Weight:	4.0 lbs. 1.8 kg.
Shipping Volume:	0.6 cu. ft. 0.02 cu. m.

Nominal fixture height, inches (mm)	Fixture installed height in base plates AP1935, AP1932 or AP1932BSP at grade, inches (mm)
14.0 (355.6)	13.78 (350)
16.0 (406.4)	15.88 (403)
18.0 (457.2)	17.88 (454)
20.0 (508.0)	19.88 (505)
22.0 (558.8)	21.88 (555)
24.0 (609.6)	23.88 (606)
26.0 (660.4)	25.88 (657)
28.0 (711.2)	27.88 (708)
30.0 (762.0)	29.88 (759)

Installation Drawing



Note: All current 6.6A versions include a lead with L-823 plug.

Compliance	Catalog number	VA	Arctic kit VA	Power factor	Transformer (no arctic kit)	Transformer (arctic kit)
FAA	861T-BA-	6.23	22.23	0.99	10/15W	25W
ICAO	861T-BC-	8.15	24.15	0.99	10/15W	25W

Accessories

Description	Catalog number	Shipping weight		Shipping volume	
		lbs.	kg.	cu. ft.	cu. m.
Base L867, Class I, 24" deep	AC21242H200301	52	23.6	2.60	0.074
Baseplate 1.5" hub, painted steel	AP1935	8	3.6	0.14	0.004
Baseplate 2" hub, painted steel	AP1932	8	3.3	0.14	0.004
Isolation transformer	See transformer section				
Bubble level	10037-956				
Stake assembly, 1.5" hub	AW2205	8	3.6	0.20	0.006
Stake assembly, 2" hub	AW2202	8	3.6	0.20	0.006

Renewal Parts

Item description	Catalog number	Item description	Catalog number
6.6A LED universal power supply	21696-1*	Column, 22"	50621-5
Blue globe	50613-B	Column, 24"	50621-6
Globe gasket	50623	Column, 30"	50621-9
O-ring	10033-119	Internal cord grip	50671-X*
LED/heat sink assembly	50667-1		
Frangible coupling, 1.5"	50617-1		
Frangible coupling, 2"	50617-2		
Column, 14"	50621-1		
Column, 18"	50621-3		

*-1 for options without arctic kit, -2 for options with arctic kit.

**Match internal cord grip suffix to column (i.e. 22" column 50621-5 requires internal cord grip 50671-5).